

**OLED**  
INTERACTIVE



STADIUM SPORTS  
///// **SOLUTIONS**



**SHOWING**  
THE BEAUTY  
OF THE WORLD

# STADIUM SPORTS ////// SOLUTIONS



## S U M M A R Y

- p. 01 ► History & European Center
- p. 02 ► Experience
- p. 04 ► Anderlecht Stadium
- p. 08 ► Boarding Technical
- p. 11 ► Perimeter Solutions
- p. 12 ► Accessories
- p. 14 ► Colosseo Systems
- p. 16 ► Advantage
- p. 17 ► Note

Probably the Best Led Boarding in the World !!



► **2007**

*Creation of the Company in Shenzhen the Electronic City of China.  
with 25 people , turn over: 1.6 million USD*

► **2009**

*Developpment of the Company with 150 workers and many oversea project  
Turn over 4,9 million USD*

► **2011**

*In 2 year the staff is dubble with 340 people . The ingeniors are the top of the  
LED industry Turn over:17 million USD*

► **2012**

*The new Perimeter is using in the Women World Cup in Japan.*

► **2013**

*The Best LED company groving with now 675 people  
Turn over 48 million USD*

► **2013**

*Installation in Belgium Anderlecht Stadium 550 meter dual perimeter  
Installation in Italy San Siro 250 meter for Milano.*

► **2014**

*Brazil : Official Led Provider of the World Cup Opening and Closing Ceremony.  
Europe Patent for Soccer LED boarding Model 10/125*

EUROPEAN SERVICE CENTER ///



► **Europe Headquarters :**

- ✓ Belgium
- ✓ France (Nice)

► **Benefits :**

- ✓ Quicker service
- ✓ On site service
- ✓ Efficient service
- ✓ Network service



BUNDESLIGA



FIFA U-17 WORLD CUP  
(MEXICO 2011)



FIFA WORLD CUP  
(JAPAN 2012)



COPPA ITALIA



J. LEAGUE



SERIE A



JUPILER PRO LEAGUE



UEFA EURO 2008



GERMAN FOOTBALL  
ASSOCIATION CUP



ANDERLECHT



MILAN



► **Tower**

P 16  
125 panels  
74 sqm



► **Bottom  
Perimeter**

P 10 SMD  
172 cabinets  
238 sqm





► **Scoreboards**

P 10 DIP  
21 cabinets



► **Up perimeter**

P 16  
330 panels



**Installation BNP Paribas Fortis Tower  
Anderlecht stadium - Belgium**







Pixel Pitch mm	:	16
Led arrangement	:	1R1G1B
LED type	:	SMD 3535
Brightness (cd/ m2)	:	4000
Grey Scale	:	4096
Refresh Rate (Hz)	:	2800
Weight	:	10 kgs

First level stadium  
best solution



**PATENT**

	P10	P12	P10 / P12.5
Pixel Pitch (mm):	10	12	v:10 h:12.5
Physical Density (dots / m2):	10.000	6,944	8,000
LED arrangement:	1R1G1B	1R1G1B	1R1G1B
LED type: 3 in 1 SMD	SMD3535S	MD3535	SMD3535
Module size (mm * mm):	160*160	192*192	150*300
Module resolution (px * px):	16*16	16*16	15*24
Module Power Consumption (W):	25	40	60

Horizontal Viewing Angle (DEG):	150	150	150
Vertical Viewing Angle (DEG):	140	140	140
Brightness (cd/m2)	10/7000	12/6000	10/125/6500
Grey Scale:	16,384	16,384	16,384
Refresh Rate (Hz):	>4,800>	4,800	>4,800
Brightness Adjustment	Manual / Auto / Programmable		
Protection Grade	IP65 front IP 54 back		
Average Power Consumption	330 w/m2	250 w/m2	280 w/m2
Maximum Power Consumption	1100 w/m2	800 w/m2	900 w/m2
Cabinet dimensions	V 960/ H 1200 V 960/ H 1500	V 960/ H 1536	V 900/ H 1500

EUROPEAN VOLTAGE SYSTEM; EMC PROTECTION TO EU STANDARDS: CE, ROHS, EN, TUV CERTIFIED  
Graphic storage included

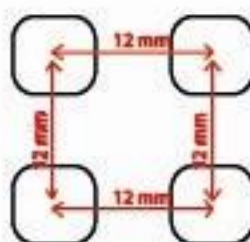
ILLUSTRATION OF 4 LED ON A MODULE

P16 & P20 ALSO AVAILABLE

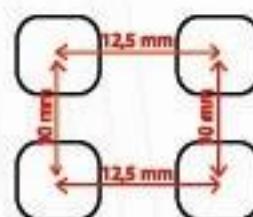
► Pitch 10 (P10)



► Pitch 12 (P12)



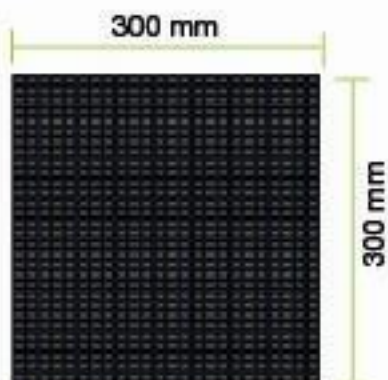
► Patent Pitch 10, 125



► Led Module







Module Front view

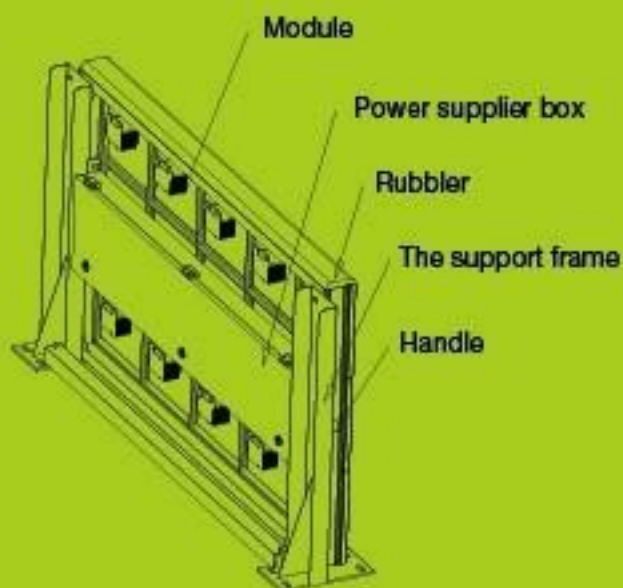


Cabinet Back view



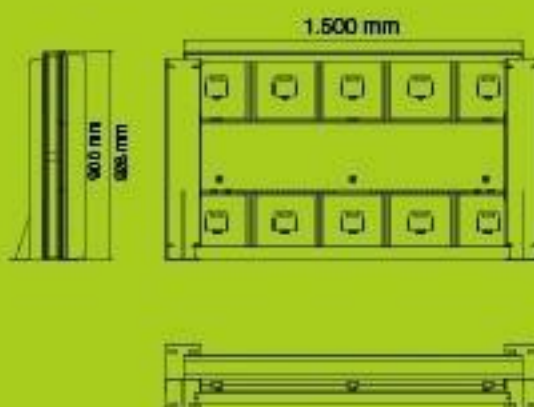
Cabinet Side view

Patent:  
90 cm



## OUR PATENT

With our Patent 10/125 for 250 meter boarding, we save 15 SQM, electricity energy, increase the view for spectators and ... save money !



Different cabinet backside design available, depend stadium request regarding playground access.



- ↑ 90 cm > 96 cm
- ⊞ Pitch SMD 10 > 12,5
- ⊞ Pitch 16 Pitch 20



▶ **Steel or Aluminium**

**Steel** is strong, heavy weight and weak against corrosion.  
**Aluminium** is light weight, Non corrosive, more expensive.



▶ **Front Maintenance Led Modules**

Screws are installed from the outside of the led display for front maintenance.  
Very handy in some cases but not possible for all pitches. (make a request)



▶ **DIP or SMD or 3in 1 DIP**

Change to SMD to have a bigger viewing angle of 140°  
Change to 3 in 1 DIP led for standard solution (less expensive)



▶ **High Refresh**

High refresh rate will make the led display visible for the camera and video recording. It is also better for the human eye. Lower refresh rate will make flicker.

< 4000Hz



> 4000Hz



▶ **Protection Soft Mask (on module)**

Outdoor Sport perimeter displays are provided with a soft mask on the led modules.  
This will protect the led display and the player from heavy impact.



▶ **Mechanic Angle Change**

For DIP, our Sport Perimeter equips the possibility to adjust the angle of the led display.  
The angle is needed to make the led display more visible to the public.  
For SMD view angle is enough. No need angle. Better for gap in the corner.



▶ **Protection bounce cushion**

Bounce cushions are requested to protect the player from impact.  
It is made from soft material that reduces.





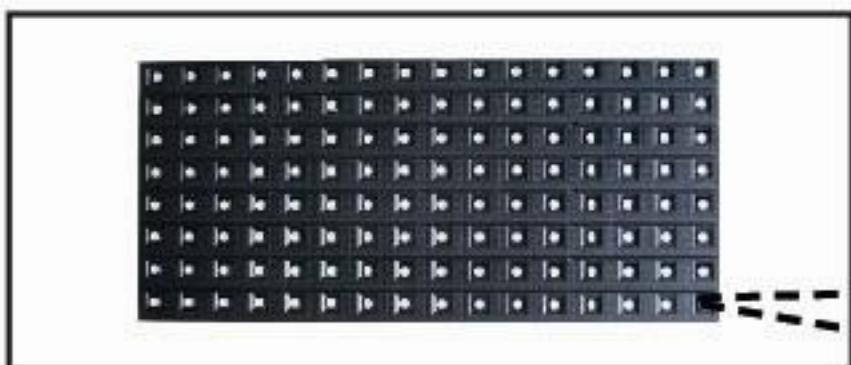
▶ **SMD LED**  
*Chips 3 in 1*



▶ **SOFT TOP COVER**  
*Protect the players*  
*Only 2cm*



▶ **SOFT MASK**  
*Impact control*  
*for the protection*



▶ **PATENT**  
*V: 10mm*  
*H: 12,5mm*

▶ **CHIPS LED**





- ▶ **Neutrik power cables**  
Electrical connection between 2 cabinets  
The powerCON is a locking 3 conductor equipment AC connector with contacts for line, neutral and pre-mating ground contact.



- ▶ **Receiver receptor**  
Use to convert fiber cable signal to rj45 signal



- ▶ **Neutrik data cables**  
Data connection between 2 cabinets  
Cable connector carrier consists of a shell, fixing disk, chuck and boot, ground contact.



- ▶ **Sending Box**  
Use to make connection between led screen and computer



- ▶ **Optical fiber**  
Use to make connection between computers and screens when the distance is upper than 100m  
This high-quality tosilink provides the transfer of optical signals.  
The robust cable construction ensures a solid performance.



- ▶ **Power Box**  
Use to make power to the led screens

## ▶ Optical fiber



### Low attenuation and greater distance

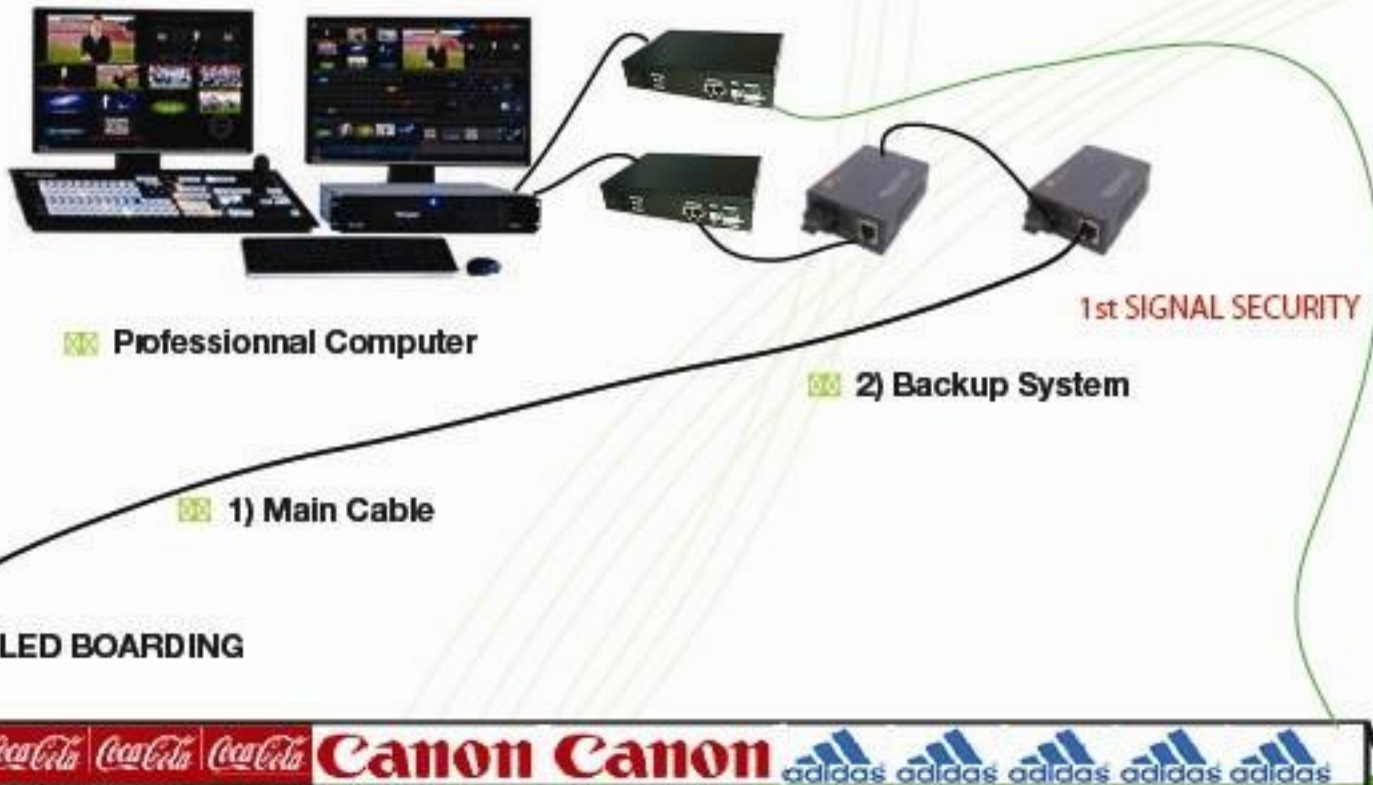
Because the fiber optic signal is made of light, very little signal loss occurs during transmission, and data can move at higher speeds and greater distances. Fiber does not have the 100-meter (9328-ft.) distance limitation of unshielded twisted pair copper (without a booster).

Fiber distances can range from 300 meters (984.2 ft.) to 40 kilometers (24.8 mi.), depending on the style of cable, wavelength, and network. Because fiber signals need less boosting than copper ones do, the cable performs better.





## STANDARD CONFIGURATION



## SIGNAL HOT BACKUP SYSTEM

### 3) Graphic Storage 2nd SIGNAL SECURITY

- Signal Hot Backup System enhances the reliability of a screen while it's working.

Automatic error detection enables the system to switch between each signal feed channel within milliseconds, so as to guarantee the consistent display effects. **SHBS** by single control system: Two ports are connected with display and the other two standby ports function as backup. When either channel goes wrong, the other channel will take over and function. **SHBS** by double control systems: Two boxes are needed for this backup system. One box is connected with display and the other one functions as backup. When either control system goes wrong, the other control system will take over and function.



### Graphic Storage dual system

dual card  
dual memory

= 4 X SECURITY

## PROFESSIONAL CONFIGURATION



### miniPERIMETER

Controls advertisement on LED perimeters and fasciae with advanced playlist features and object animation control

### miniDIRECTOR

Controls LIVE video/LIVE cameras and replays, advertisements and LED screen graphics. Supports up to 4 HD cameras

### miniTIMEPLAYER

LED screen controller; emulates a digital scoreboard for a variety of different sports; controls video advertising and enables pre-programmed in-game presentations

### miniPERIMETER





## miniDIRECTOR



### Features:

Intelligent LED video-processor that enables presentation of different sports on LED screen  
Switch & mix system for 4 live cameras with render objects, OSD, graphics, 4 previews and PG out  
Replay system from all inputs with SHORT, MEDIUM, LONG presets or custom options  
Timer application supporting ice hockey, soccer, athletics, basketball, volleyball, tennis, curling, etc. and various graphic templates for presentation  
Optional: match records distributed to mobile Apps or on an Internet stream

## miniTIMEPLAYER



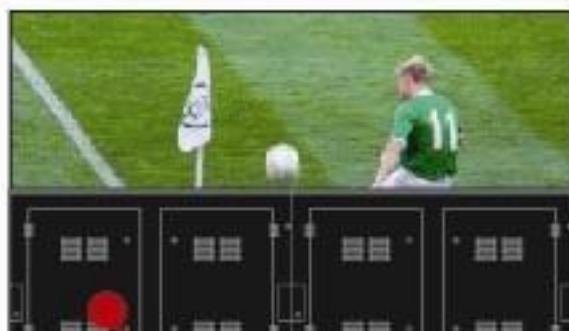
### Features:

Intelligent LED video-processor for generating scoreboard graphics on standard LED screen  
Multiple sport timekeeping and scoring support (ice hockey, soccer, athletics, basketball, volleyball, tennis, curling, etc.)  
Custom scoreboard design for multiple sports  
On-screen graphics, advertisement, video jingles, game presentation support  
Programmable teams names and logos  
Penalties times and infractions pre-programmed for multiple sports

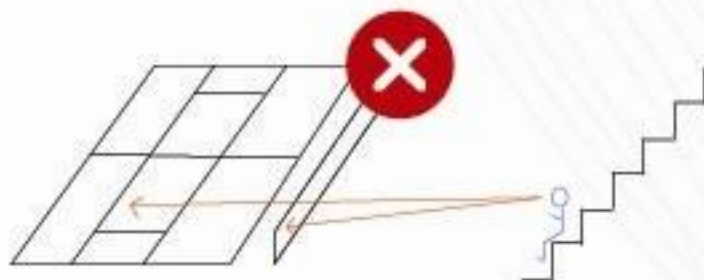
## ► WHY BOARDING 90CM HIGH IS BETTER ?!

### A) LED BOARDING 104 CM HIGH : ► (96 CM + 8 CM FOAM)

Spectators seated in the first row of the bleachers do not see the entire game on the football field



CLASSIC  
LED BOARDING



### ► EUROPEAN PATENT

Probably the Best Boarding in the World !

### B) LED BOARDING 92 CM HIGH ► (90CM + 2 CM SILICONE PROTECTION)

Spectators seated in the first row of the bleachers to see the entire game on the football field



OUR PROFILED  
LED BOARDING





Robert SAEZ



robert.saez@oledinteractive.lu GSM +352661455018  
TEL +352 48214 88

OLED Interactive Sarl  
Rue de l'avenir 5  
Foetz 3895  
Luxembourg  
FAX +3524821448

TVA LU26121286  
Matricule 2013 2417 467  
IBAN LU280141348273600000  
BIC CELLLULL  
GSM +352661455018



OFFICIAL PARTNER OF  
FIFA WORLD CUP BRASIL